



Connecting State Board Initiatives with Governor's Council on Education Recommendations: Market Value Assets and Work-Based Learning



Kansas leads the world in the success of each student.

Our Vision for Kansas ...



Kansas leads the **world** in the success of each student

Kansas State Department of Education | www.ksde.org | #KansansCan

Kansas leads the world in the success of each student.

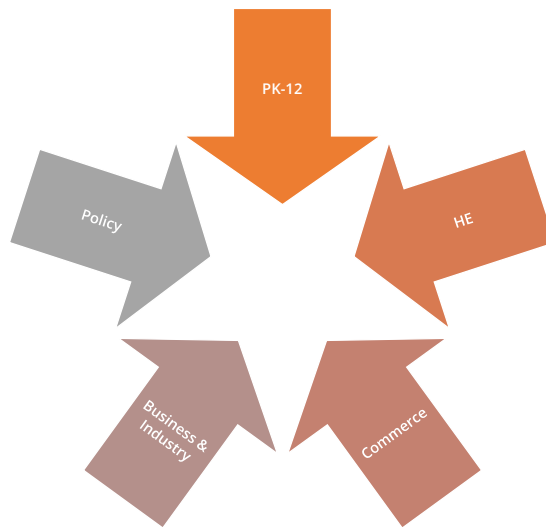


Vision

Kansans cultivating the highest educated and skilled workforce in the Midwest.

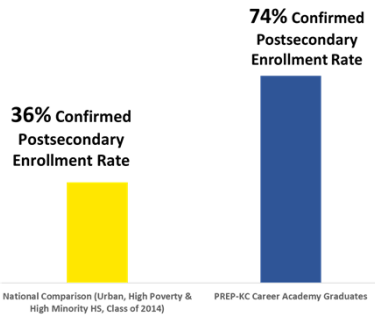
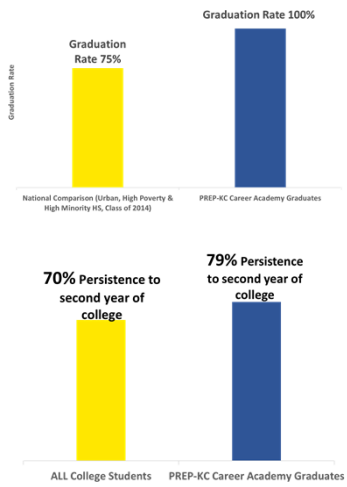


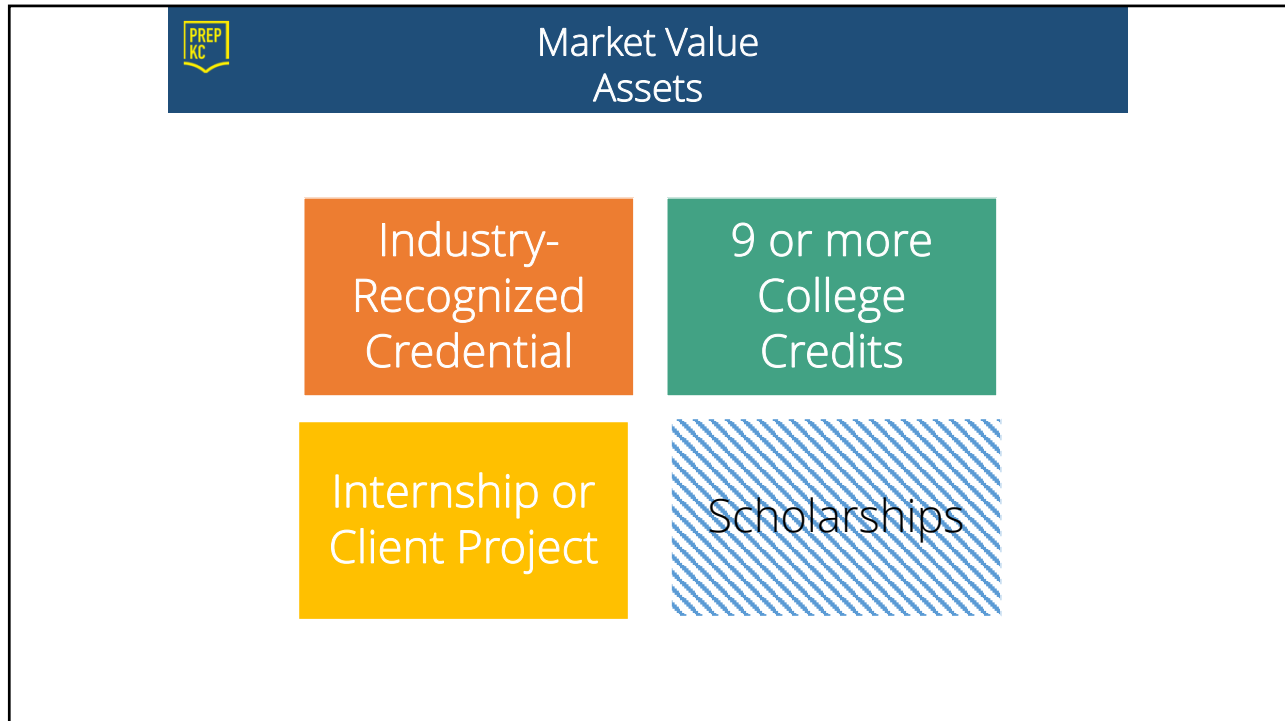
Governor's Council on Education and State Board of Education Interconnected Approach






PREP KC Career Academy Results (Class of 2014)





 <h2>High Schools: Before and After Redesign</h2>	
<p>Traditional High School</p> <ul style="list-style-type: none"> • One size fits all curriculum. • Fixed bell schedules and course sequences. • Random selection of general electives. • HS course of study not tied to goals after high school. • Specialized programs serve a limited number of students. 	<p>High School with "Wall to Wall" College & Career Pathways</p> <ul style="list-style-type: none"> • Individual postsecondary plan for every student. • Industry-themed electives. • Flexible class times and structures. • Market Value Assets (College Credit, Certifications, Internships) built into HS curriculum. • Learning environments that emphasize "real-world" competencies (collaboration, adaptability, communication).

Regionally-vetted Market Value Assets (MVAs)



Work experiences

- Client connected project
- Internship



Industry-recognized credentials



College credit

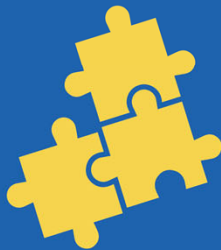


Entrepreneurial experiences



#RealWorldLearningKC

COMMON GOAL



By 2030

All high school students across our region graduate with market value assets and a diploma, preparing them for future work and learning.



KANSAS STATE DEPARTMENT OF EDUCATION



Individual Plan of Study

All students, beginning in middle school, will develop an IPS based on their career interests. An IPS is both the product a student develops and a process the school implements to guide students in developing future plans. A student's IPS is developed cooperatively between the student, school staff members and family members.

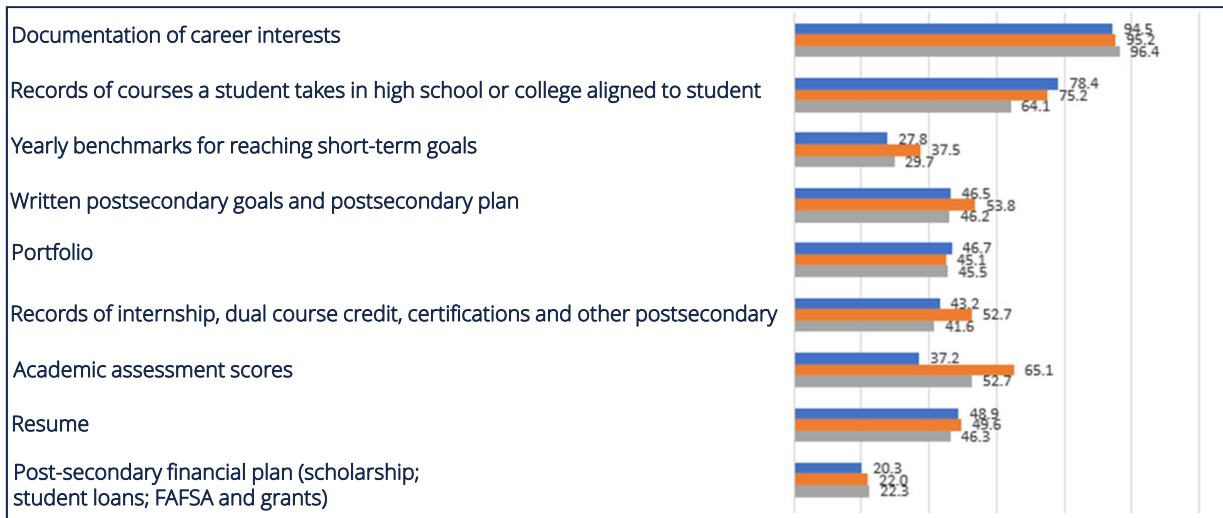
There are four minimum components of a student's IPS:

- A graduated series of strength finders and career interest inventories to help students identify preference toward career clusters.
- Eighth- through 12th-grade course-builder function with course selections based on career interests.
- A general postsecondary plan (workforce, military, certification program, two- or four-year college).
- A portable electronic portfolio.



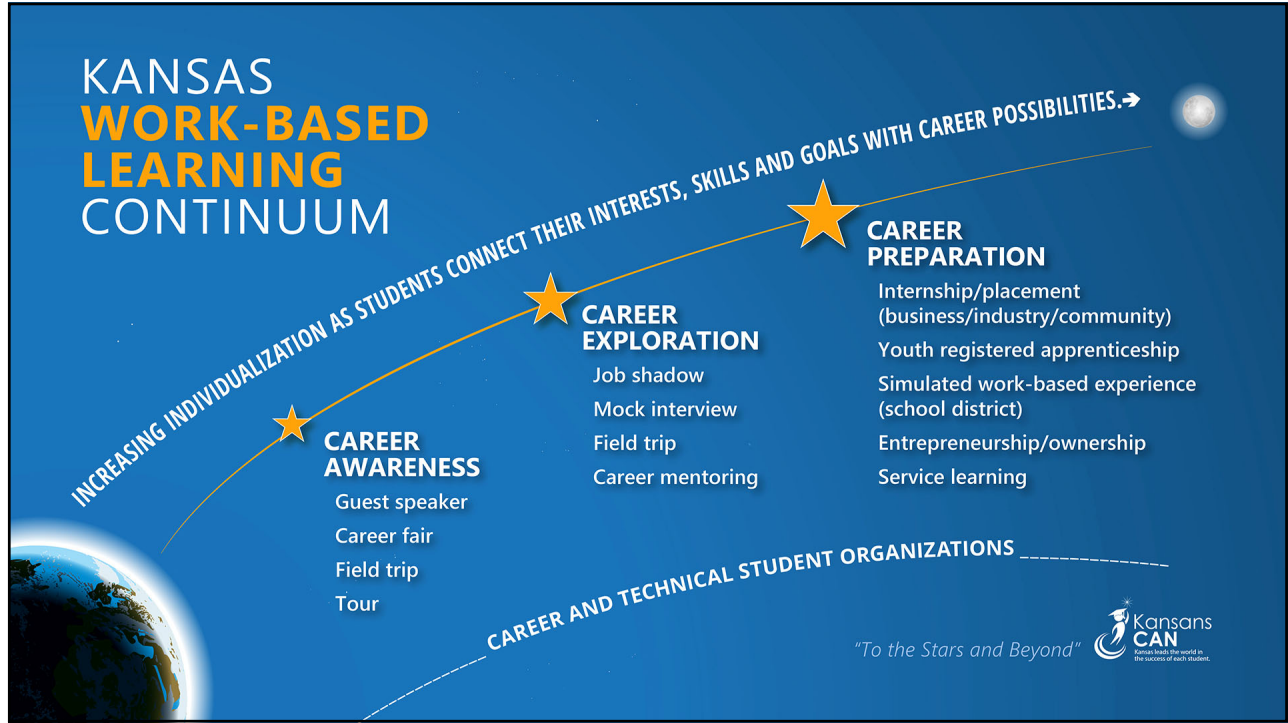
The vision requires that every middle and high school student in Kansas will have an IPS.

Elements Currently Included in the IPS for Students (%)



IPS Survey 2021 Participation Rate: 100%

■ 2019 ■ 2020 ■ 2021



IPS Implementation and Evaluation

Sample IPS Objectives and Student Improvement Goals for Districts to Support the Kansas Vision

Rigorous course participation

- A total of X% of the grade X students who completed (# or all) IPS lessons will have developed an academic plan that will enable them to pursue a postsecondary program or degree.

Early college

- A total of X% of grade X and Y students who completed (# or all) IPS lessons will participate in early college courses.

Work-based learning

- A total of X% of grade X and Y students who completed (# or all) IPS lessons will have completed a work-based learning career preparation experience.

Industry-recognized credential or certificate

- A total of X% of grade X and Y students who completed (# or all) IPS lessons will complete an industry-recognized credential or certificate prior to graduating from high school.



Work-Based Learning: Cross-Agency Regional Networks



KANSAS STATE DEPARTMENT OF EDUCATION

Kansas Department of Commerce

KANSASWORKS "Your Workforce Network"

THE KANSAS BOARD OF REGENTS 1925

Kansas Department of Labor

Work-Based Learning Regional Districts

Kansas State Department of Education | www.ksde.org | #KansansCan *Kansas leads the world in the success of each student.*

Region One:
 Abilene USD 435
 Medicine Lodge USD 254
 St John-Hudson USD 350
 Goodland USD 352
 Great Bend USD 428
 Hesston USD 460
 Hugoton USD 210

Region Two:
 Topeka Seaman USD 345
 Wamego USD 320
 Osage City USD 420
 Manhattan USD 383

Region Three:
 KCKPS USD 500
 Spring Hill USD 230
 De Soto USD 232

Region Four:
 Clearwater USD 264
 Wellington USD 353
 Chaparral USD 361/Attica 511
 El Dorado USD 490
 Maize USD 266
 Circle USD 375

Region Five:
 Humboldt USD 258
 Eureka USD 389
 Fredonia USD 484
 Southern Lyon County USD 252
 Iola USD 257
 Chanute USD 413

Work-Based Learning Regional Districts

Kansas State Department of Education | www.ksde.org | #KansansCan *Kansas leads the world in the success of each student.*

Work-Based Learning Digital Reference Guide



Kansas leads the world in the success of each student.

Kansas State Department of Education | www.ksde.org | #KansasCan

Kansas leads the world in the success of each student.

WORK-BASED DIGITAL REFERENCE GUIDE

[Return to Table of Contents](#)

Work-Based Learning Definition, Continuum and Benefits

Definition

WORK-BASED LEARNING (WBL) includes a continuum of awareness, exploration and preparation that combines an individual's career goals, structured learning and authentic work experiences implemented through a sustained partnership with Kansas business/industry. WBL activities with industry or community professionals culminate in a validation and measurement of acquired knowledge, skills and possible employment.

WBL Continuum

WBL in Kansas is organized along a continuum of experiences that offer students varying levels of exposure to career awareness, exploration and specific preparation activities. Before completing the Kansas WBL: Personalized Learning Plan (PLP), all stakeholders should determine which WBL experience the student will have.



- WORK-BASED LEARNING DEFINITION, CONTINUUM AND BENEFITS
- KANSAS VISION FOR STUDENT SUCCESS
- CAREER ADVISING AND DEVELOPMENT
- CAREER AWARENESS
- CAREER EXPLORATION
- CAREER PREPARATION
- WORK-BASED LEARNING
- LABOR LAWS AND MARKET
- KANSAS CAREER ASSISTANCE

Resource

[Kansas WBL - PLP Guidance Document*](#)

Career Fields, Clusters and Pathways

- [Kansas Career Fields, Clusters and Pathways Infographic*](#)
- [Kansas Career Cluster Guidance Handbook 2021-2022*](#)
- [Advisory Committee Guidance webpage*](#)

Kansas Work-Based Learning: Personalized Learning Plan

GUIDANCE DOCUMENT



Kansas State Department of Education | www.ksde.org | #KansansCan

Kansas leads the world in the success of each student.



Individual Plan of Study Digital Reference Guide



Kansas leads the world in the success of each student.

July 23, 2021

Kansans Can School Redesign: *Applied Learning Model*




Kansas leads the world in the success of each student.

Kansans Can School Redesign Principles

<p>Student Success Skills</p>	<p>Family, Business, and Community Partnerships</p>
<p>There is an integrated approach to develop student social-emotional learning.</p>	<p>Partnerships are based on mutually beneficial relationships and collaboration.</p>
<p>Personalizing Learning</p>	<p>Real World Application</p>
<p>Personalized learning places the whole child at the center of instruction. It is informed by strong educator/student/family/community relationships to provide equity and choice in time, place, path, pace and demonstration of learning.</p>	<p>Project-based learning, internships, and civic engagement makes learning relevant.</p>



Liberal High School



ANGRY RED
ADVANTAGE

By 2024, EACH GRADUATE will have:

Individual Plan of Study	Internships & Work Study	Civic Engagement	Certificate or Acceptance Letter
<ul style="list-style-type: none"> Four-year Plan Self-Care Plan Post-Secondary Plan Personal Statement Personalized Test-Prep Plan 	<ul style="list-style-type: none"> Strengths Identification Career Research Work Ethics Training Identification of Qualifications/ Training needed for potential profession 	<ul style="list-style-type: none"> Activity engagement Civic Profiles Voter registration Community service hours Awareness and collaboration with community organizations 	<ul style="list-style-type: none"> Career-focused field trips Career pathway courses Industry-recognized certificate or acceptance to military, college, trade school, or job

VISION STATEMENT

EMPOWER EACH STUDENT AT LIBERAL HIGH SCHOOL
TO BECOME MORE PREPARED THAN THEIR PEERS FOR LIFE AFTER HIGH SCHOOL THROUGH THE ANGRY RED ADVANTAGE

Defining Success



- A Successful Kansas High School Graduate has the
 - **Academic preparation,**
 - **Cognitive preparation,**
 - **Technical skills,**
 - **Employability skills** and
 - **Civic engagement**
- to be successful in postsecondary education, in the attainment of an industry recognized certification or in the workforce, without the need for remediation.



Kansas State Department of Education | www.ksde.org | #KansansCan

Kansas leads the world in the success of each student. 



Natalie Clark

*Education Program Consultant
IPS Coordinator
Career, Standards and Assessment Services
ndclark@ksde.org*

Content Provided By:

Jay Scott

*Secondary School Redesign Specialist
Division of Learning Services
jscott@ksde.org*

Content Provided By:

Dr. Cindy Lane, Governor's Council on Education

*Governor's Council on Education Chair
kcklane@yahoo.com*

Susan Wally, Governor's Council on Education

*President and CEO
Prep-KC
swally@prepkc.org*

Donna M. (Deeds) McDaniel, Governor's Council on Education

*Educator in Residence
Ewing Marion Kauffman Foundation
dmcdaniel@kauffman.org*

The Kansas State Department of Education does not discriminate on the basis of race, color, national origin, sex, disability or age in its programs and activities and provides equal access to the Boy Scouts and other designated youth groups. The following person has been designated to handle inquiries regarding the nondiscrimination policies: KSDE General Counsel, Office of General Counsel, KSDE, Landon State Office Building, 900 S.W. Jackson, Suite 102, Topeka, KS 66612, (785) 296-3201.

